



# Envelope Guide

This guide is for matching your invitations, announcements, or stationery to the right envelope. This list shows which envelopes are kept in stock to be easily shipped with your order. We also offer envelope imprinting and variable data imprinting.

## PAPER & FINISH • PRICING PER ENV.

ENVELOPE SIZE		CARD SIZE	ULTRA WHITE SMOOTH	SOFT WHITE (IVORY)	ULTRA WHITE EGGSHELL	WHITE (CREAM) EGGSHELL	WARM WHITE EGGSHELL	BRILLIANT/NATURAL WHITE COTTON	GREEN GROCER KRAFT	COLORPLAN	LINERS AVAILABLE
5.25 x 7.25	A7	5 x 7	.10	.11	.11	.10	.12	.24	.17		•
4.375 x 5.75	A2	4.25 x 5.5	.08	.08	.10	.12	.12	.23	.14		•
3.625 x 5.125	4Bar	3.5 x 4.875	.12	.10		.11		.20	.14		•
3.625 x 5.25	FN	3.5 x 5	.12			.11					•
2.25 x 3.75	EC	2 x 3.5	.22	.22							
2.75 x 3.75	EX/FEX	2.5 x 3.5	.18	.21							
3 x 3.125	SQ EC	2.75 x 2.75	.14	.13							
4.124 x 9.5	SLIM JIM	3.875 x 9.25	.16	.17		.16					
4.75 x 6.5	A6	4.5 x 6.25	.09	.09							•
5.5 x 5.5	SQUARE	5.25 x 5.25	.09	.13	.08						•
5.5 x 8.125	A8	5.25 x 7.875	.15	.15							•
5.75 x 8.75	A9	5.5 x 8.5	.13	.21		.18			.18		•
5.75 x 8.125	PC GUMMED	5.5 x 7.875	.12	.12		.15					•
5.75 x 8.125	PC UNGUMMED	5.5 x 7.875		.13	.13	.13					•
6 x 8.375	PC OUTER/GUMMED	FITS PC INNER ENV		.25	.15	.15					•
5.625 x 9.5	FPC	5.375 x 9.25	.15								•
5 x 9.5	SKINNY FPC	4.75 x 9.25	.15								•
6.5 x 6.5	LARGE SQ	6.25 x 6.25	.18								•
EURO FLAP	3.625 x 5.125	4Bar			.17	.17				.22	•
	4.375 x 5.75	A2			.17	.20				.25	•
	4.75 x 6.5	A6			.21	.21					•
	5.25 x 7.25	A7			.23	.23				.33	•
	5.25 x 7.25	A7 UNGUMMED			.23	.23					•
	5.5 x 7.5	A7 OUTER/GUMMED	FITS A7 INNER ENV			.28	.28				•
	5.75 x 8.75	A9			.27	.27				.46	•
	5.75 x 8.75	A9 UNGUMMED			.23	.23					•
	6 x 9	A9 OUTER/GUMMED	FITS A9 INNER ENV			.23	.23				•
	5.5 x 5.5	SQUARE			.18	.18					•



# Envelope Guide

CMYK ENVELOPE IMPRINTING	.22 (PER SIDE)	* Subject to \$1.24 set up fee per unique design
WHITE INK IMPRINTING	.42 (PER SIDE)	* Subject to \$1.24 set up fee per unique design
VARIABLE DATA IMPRINTING	5.50 FLAT FEE	(in addition to envelope imprinting charges and envelope price)

*Imprinting prices shown are per envelope per side*

## Colorplan Euro Flap Envelopes

### IMPRINTING AVAILABILITY

CMYK WHITE



**EBONY**  
(70, 50, 20, 100)



**IMPERIAL BLUE**  
(90, 78, 46, 39)



**CLARET**  
(56, 84, 58, 57)



**DARK GREY**  
(10, 10, 0, 80)



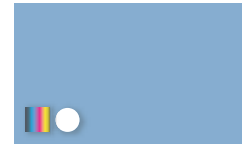
**MID GREEN**  
(60, 40, 70, 10)



**SAPPHIRE**  
(89, 64, 22, 7)



**FUCHSIA**  
(8, 86, 5, 0)



**NEW BLUE**  
(45, 20, 5, 3)



**REAL GREY**  
(0, 0, 0, 40)



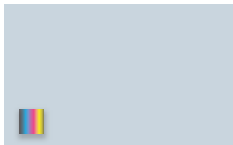
**LAVENDER**  
(21, 25, 0, 0)



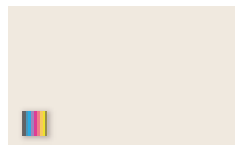
**AZURE**  
(33, 10, 0, 0)



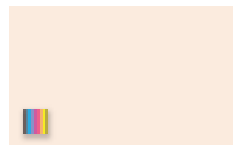
**CANDY PINK**  
(0, 19, 8, 0)



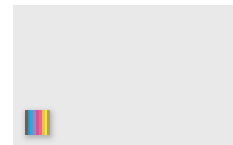
**COOL BLUE**  
(19, 9, 7, 1)



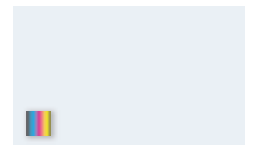
**MIST**  
(5, 7, 10, 0)



**BLUSH**  
(0, 7, 10, 1)



**PALE GREY**  
(8, 6, 6, 0)



**COOL GREY**  
(7, 3, 2, 0)

**ONLY AVAILABLE IN A2 AND A7: NEW BLUE, PALE GREY, SAPPHIRE, AZURE, COOL GREY, CANDY PINK, FUCHSIA, AND LAVENDER**

Want samples of our Colorplan Envelopes? You can add a Colorplan Sample pack to any order! Simply enter the code: Colorplan Sample Pack in the item number search box.



What type of product do you want to order?

Select Product Type

You may also search by item number

Colorplan Sample Pack

Search

Product Description

A7 Colorplan Envelope Sample Pack (8 colors)

Item #

Colorplan Sample Pack

Pricing by order quantity